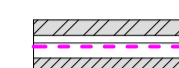
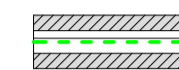
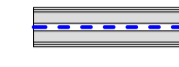
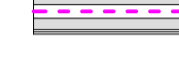

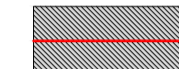
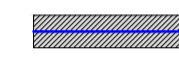


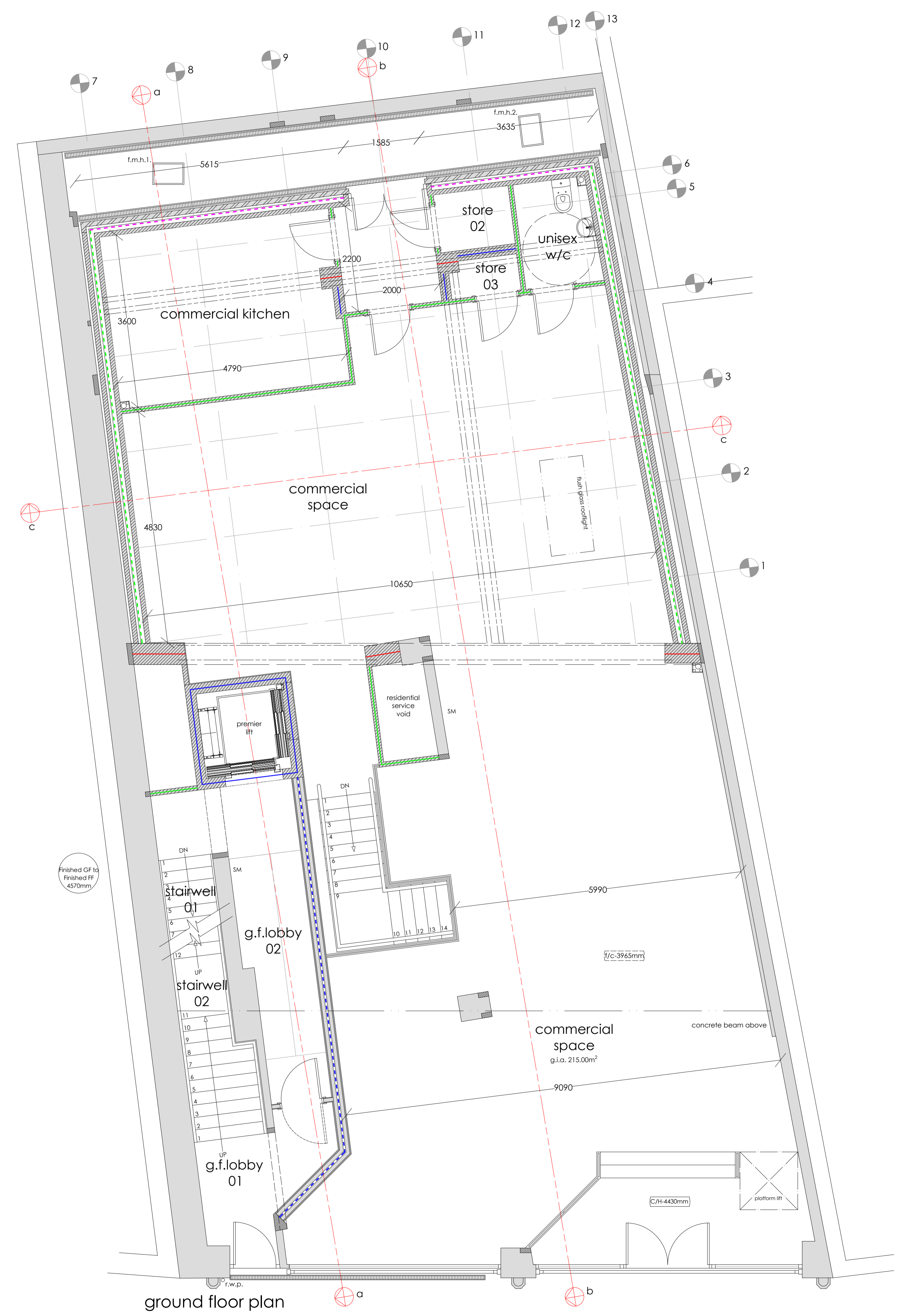


wall types

-  ground floor external wall - 12.5mm +/- thick cement:sand backing render with 100mm dense concrete blockwork (10.4N/mm²) inner skin (first, second, third floor 7N/mm²), 100mm rigid insulation partial cavity fill, 50mm clear cavity, 102.5mm fairfaced brickwork to outer skin.
-  ground floor internal/external wall - 12.5mm +/- thick cement:sand backing render with 100mm dense concrete blockwork (10.4N/mm²) inner skin (first, second, third floor 7N/mm²), 100mm rigid insulation partial cavity fill, 50mm clear cavity, 100mm dense concrete blockwork (10.4N/mm²) outer skin.
-  internal separating wall - steel frame robust detail e-ws-1-2 or more layers of gypsum based board (minimum total nominal mass per unit area 22kg/m² both sides, all joints staggered 200mm min between inner faces of wall linings, 50mm min, unfaced mineral wool bats (density 33-60 kg/m³))
-  internal separating wall - steel frame robust detail e-ws-1-2 or more layers of gypsum based board (minimum total nominal mass per unit area 22kg/m² both sides, all joints staggered 200mm min between inner faces of wall linings, 90mm min, unfaced mineral wool bats (density 33-60 kg/m³))
-  internal separating wall - steel frame (metsec or similar) 75mm stud at 450 ctrs, 15mm gypsum fireline boards both sides to achieve 1 hour fire resistance.
-  internal separating wall - steel frame (metsec or similar) 75mm stud at 450 ctrs, 12.5mm gypsum wall boards both sides to achieve 30 minute fire resistance.
-  internal wall - 12.5mm +/- cement:sand backing render both sides, 440mm dense concrete blockwork (10.4N/mm²)
-  internal wall - 12.5mm +/- thick cement:sand backing render both sides (except lift shaft), 215mm dense concrete blockwork (10.4N/mm²), 12.5mm +/- cement:sand backing render
-  internal wall - 12.5mm +/- thick cement:sand backing render both sides, 100mm dense concrete blockwork (10.4N/mm²)



revision	
a	
b	
c	
d	
e	
f	
g	